

TECHNICAL DATA

DESCRIPTION:

SERIES 1781 IS A THERMALLY BROKEN TOP HUNG BI- FOLD DOOR SYSTEM USING ISO BAR THERMAL BREAK. O/A FRAME DEPTH IS 4 1/2" AND PANEL THICKNESS IS 2 1/4" USING ECLIPSE (e3) CARRIER SYSTEM. THIS SYSTEM IS IDEALLY SUITED FOR OUTSWING EXTERIOR FOLDING AND HAS ONLY BEEN TESTED THIS WAY. NO TESTING FOR INSWING PANEL HAS BEEN DONE AND SHOULD ONLY BEEN CONSIDERED IF CERTAIN SITE CONDITIONS EXIST, IE. OVERHANG, MINIMAL EXPOSURE TO DIRECT RAIN. CLICK ON TO SEE DTLS. 2 AND 2a.



FINISH:

ALUMINUM EXTRUSIONS ARE STOCKED IN # 10 MILL FINISH .
OTHER FINISHES ARE AVAILABLE UPON REQUEST.
DELIVERY WILL DEPEND ON FINISH

LIMITATIONS:

MAXIMUM PANEL WEIGHT:220 lbs (100kg) EACH PANEL
MAXIMUM PANEL WIDTH: 39" (990mm)
MAXIMUM PANEL HEIGHT: USING 1" IGU (6mm+6mm) **118"** [2997mm].
MAXIMUM NUMBERS OF PANELS: 8 PANELS FOLD TO ONE SIDE

ASSEMBLY:

WELDED CORNER ASSEMBLY

GLAZING:

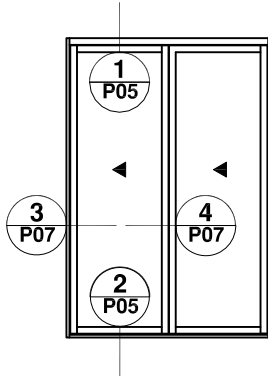
SERIES 1781 DOORS WILL ACCEPT 1" (25mm) SEALED UNITS

INSTALLATION REQUIREMENTS:

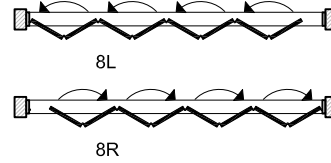
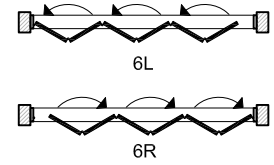
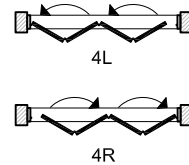
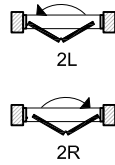
TOP TRACK MUST BE ANCHORED TO SOLID STRUCTURE ADEQUATE TO CARRY THE TOTAL WEIGHT OF THE DOOR, AT EACH END OF THE TRACK.
DOOR FRAME MUST BE, LEVELLED, SQUARED AND BOTTOM TRACK MUST BE PLUMBED WITH THE TOP TRACK.

TYPE OF DOORS

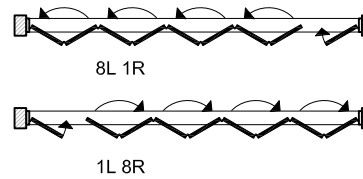
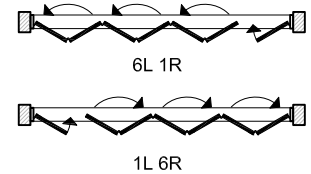
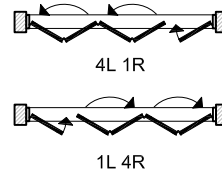
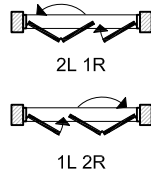
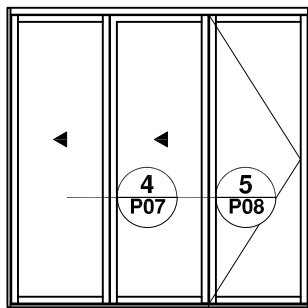
TYPE A



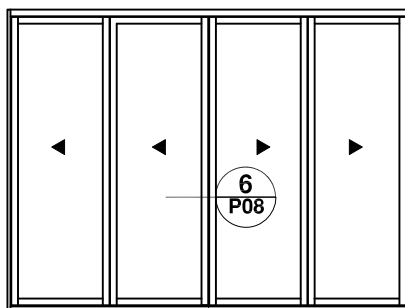
✱ THIS CONFIGURATION IS NOT ACCESSIBLE FROM OUTSIDE



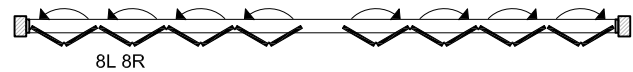
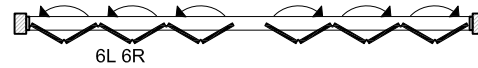
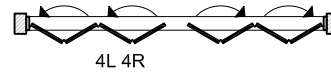
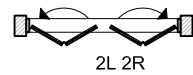
TYPE B



TYPE C



✱ THIS CONFIGURATION IS NOT ACCESSIBLE FROM OUTSIDE

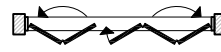
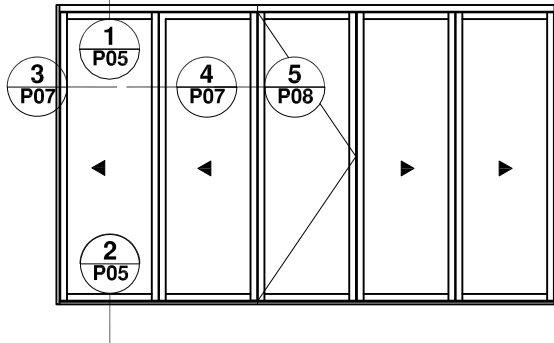


✱ MID RAILS ARE OPTIONAL.

✱ MAXIMUM NUMBER OF PANELS: 8 PANELS FOLD TO ONE SIDE

TYPE OF DOORS

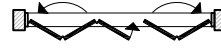
TYPE D



2L 3R



2L 5R



3L 2R



5L 2R



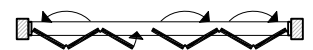
2L 7R



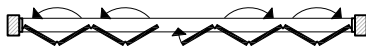
4L 3R



7L 2R



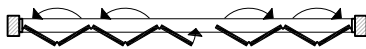
3L 4R



4L 5R



4L 7L



5L 4R



7L 4R



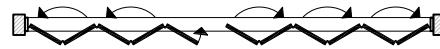
6L 3R



6L 5R



3L 6R



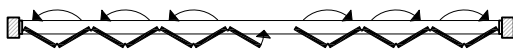
5L 6R



6L 7R



8L 3R



7L 6R



3L 8R



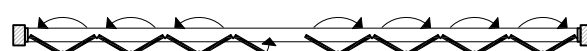
8L 5R



8L 7R



5L 8R

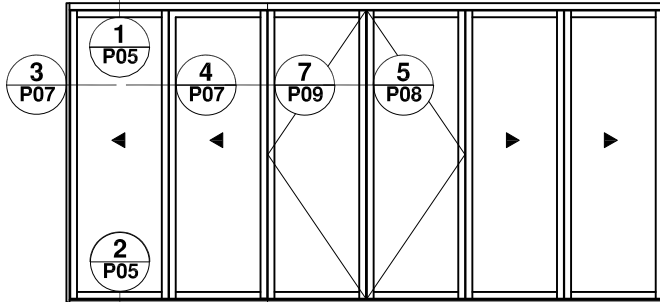


7L 8R

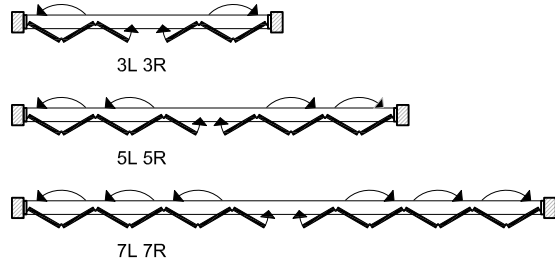
- * MID RAILS ARE OPTIONAL.
- * MAXIMUM NUMBER OF PANELS: 8 PANELS FOLD TO ONE SIDE

TYPE OF DOORS

TYPE E

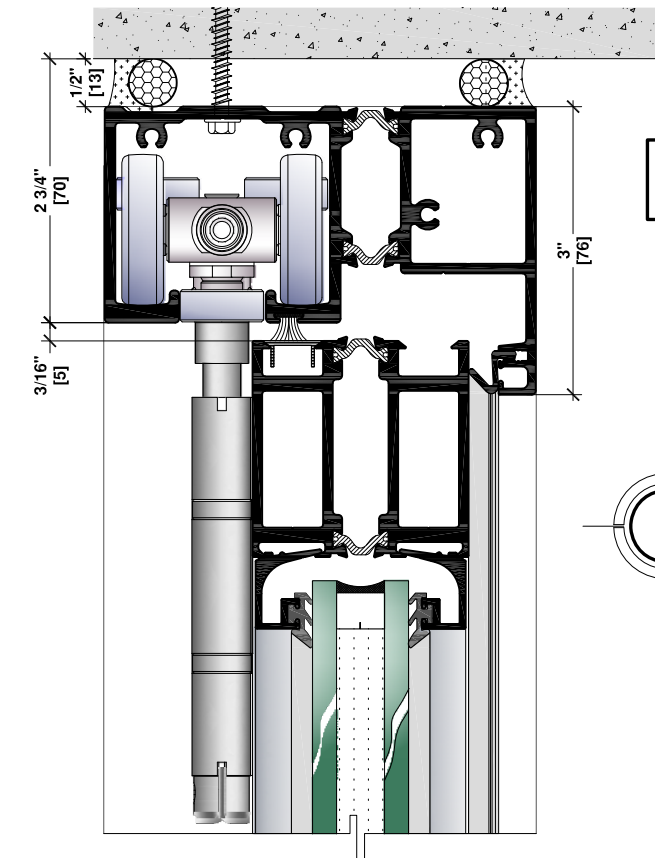


- * MID RAILS ARE OPTIONAL.
- * MAXIMUM NUMBER OF PANELS: 8 PANELS
FOLD TO ONE SIDE



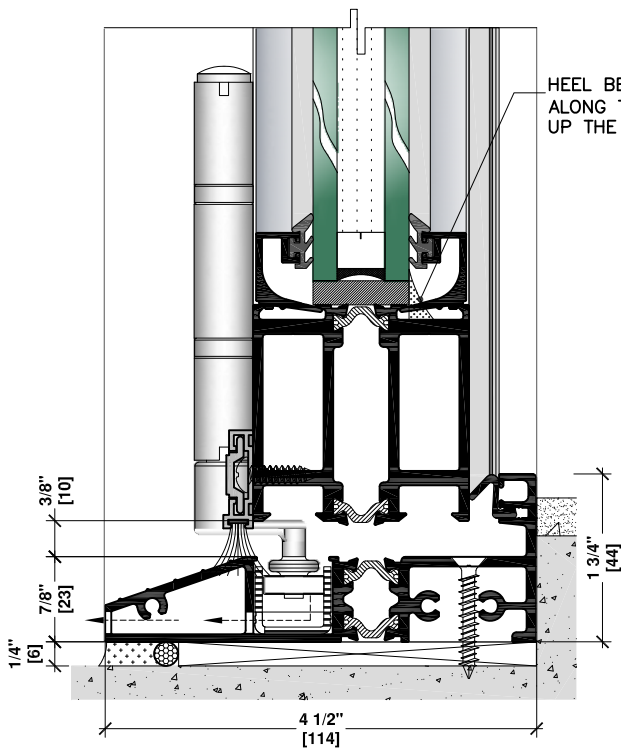
SERIES 1781

BI - FOLD DOOR SYSTEM

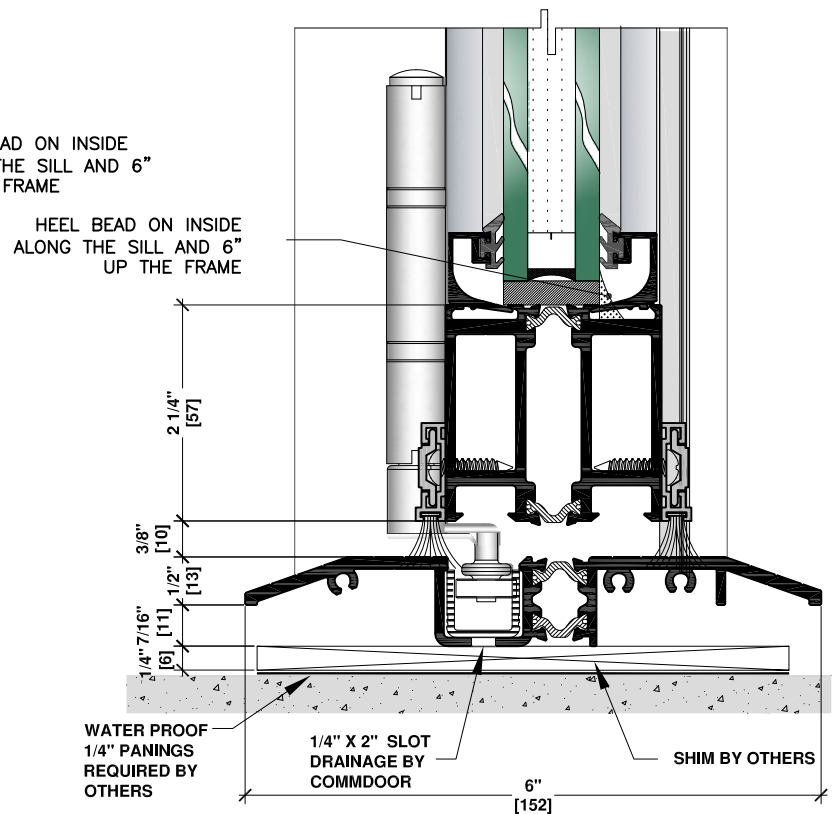


NOTE:
STRUCTURE SUPPORT IS
REQUIRED AT TOP TRACK

1 BI-FOLD DOOR
HEAD CONDITION



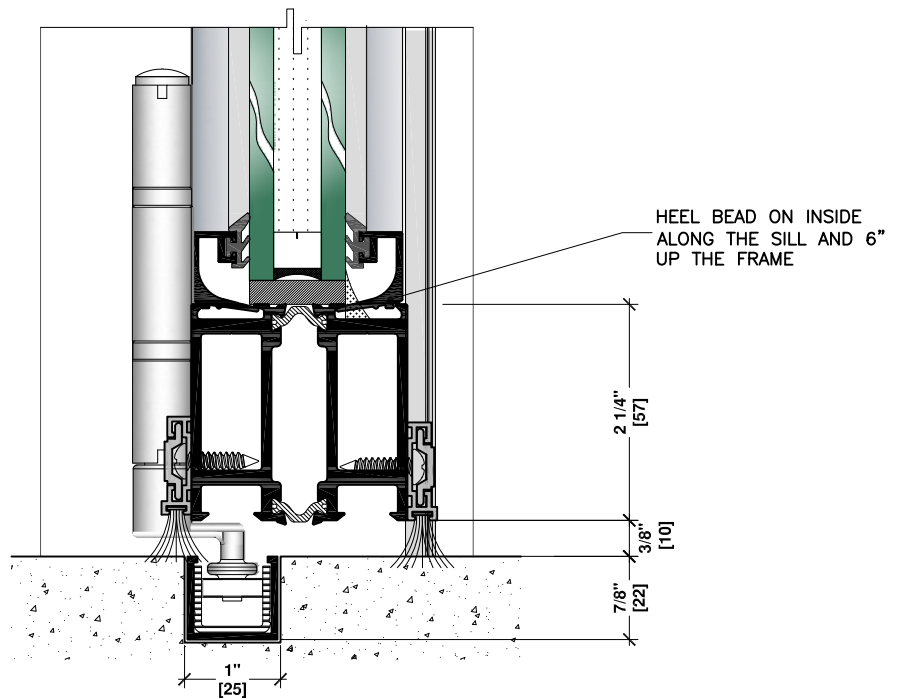
2 BI-FOLD DOOR
SILL CONDITION OPEN OUT



2a BI-FOLD DOOR
SILL CONDITION OPEN OUT

SERIES 1781

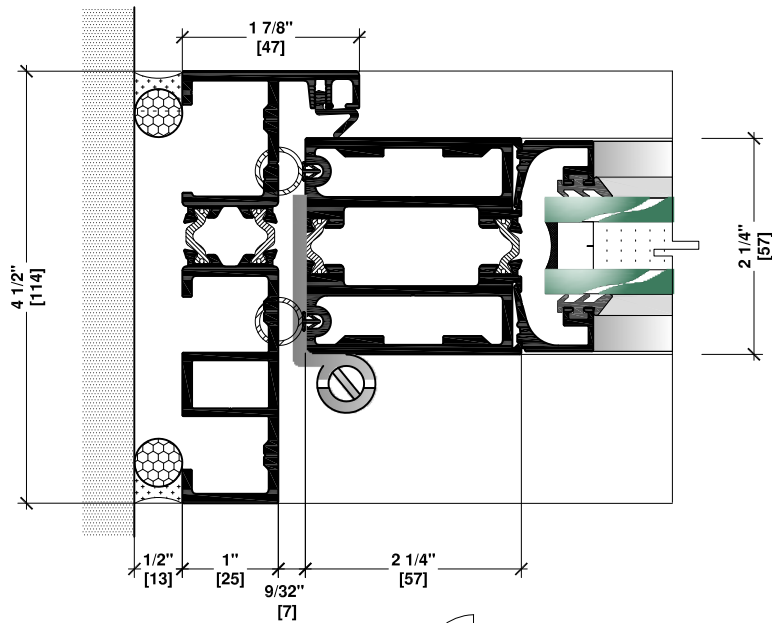
BI - FOLD DOOR SYSTEM



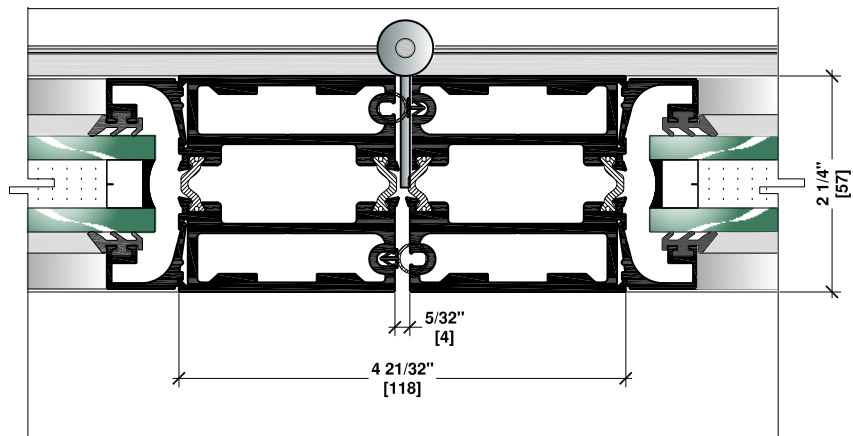
2b BI-FOLD DOOR-OPEN OUT
SILL CONDITION

SERIES 1781

BI - FOLD DOOR SYSTEM



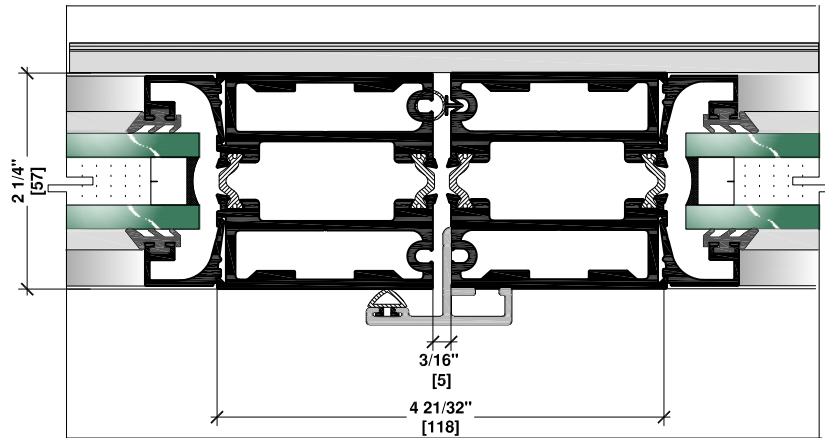
3 BI-FOLD DOOR JAMB CONDITION



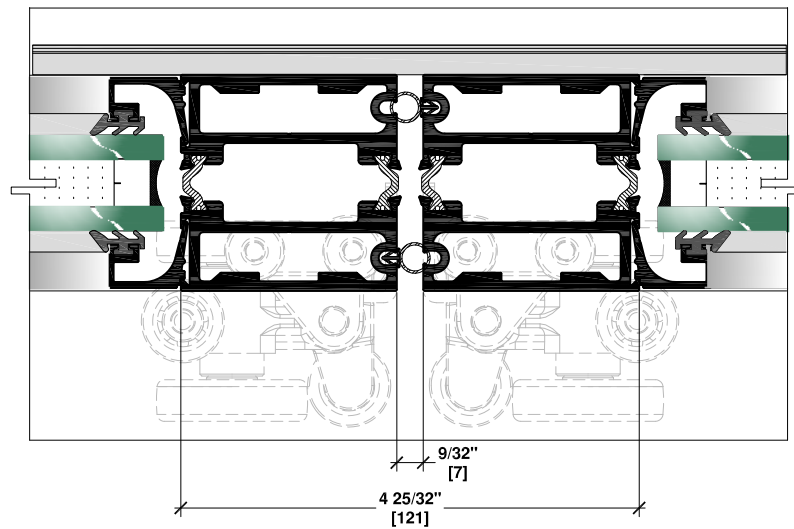
4 BI-FOLD DOOR HINGE CONDITION

SERIES 1781

BI - FOLD DOOR SYSTEM



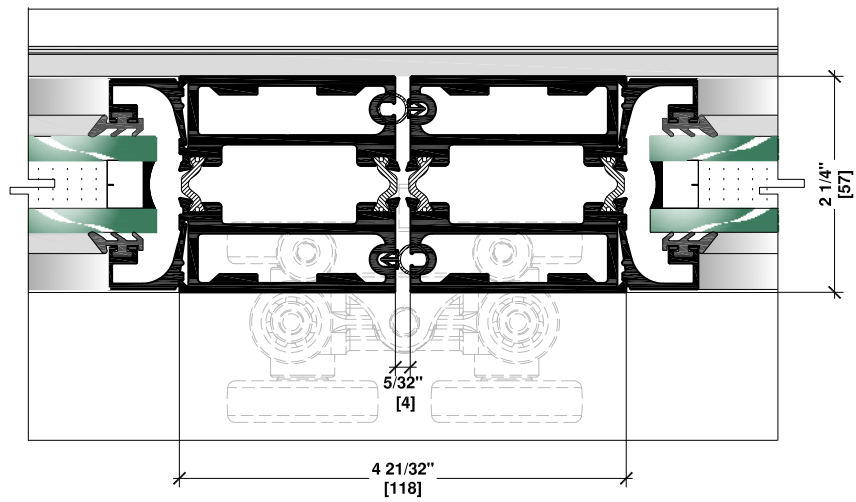
5 BI-FOLD DOOR @ BUTT CONDITION
LEFT CARRIER & SWING DOOR OR
SWING DOOR & SWING DOOR



6 BI-FOLD DOOR
BUTT CONDITION
@ CARRIERS

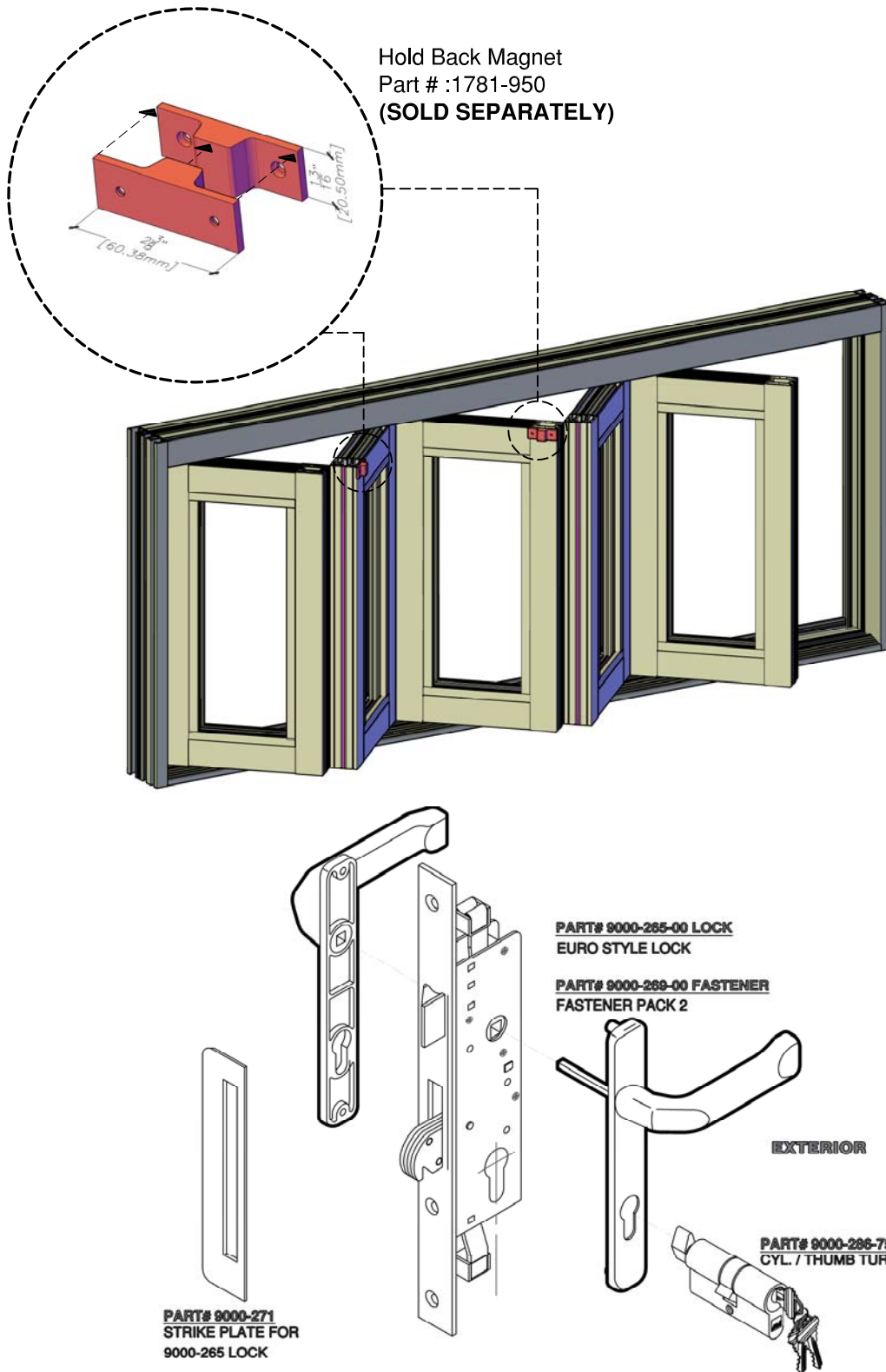
SERIES 1781

BI - FOLD DOOR SYSTEM



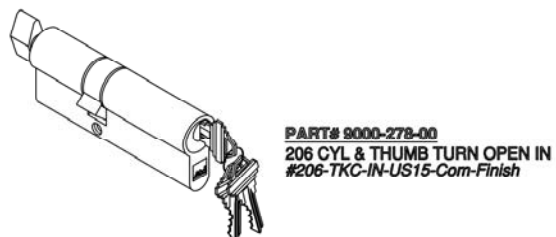
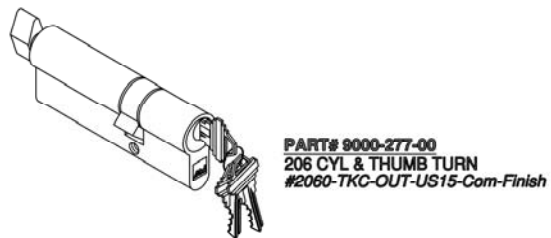
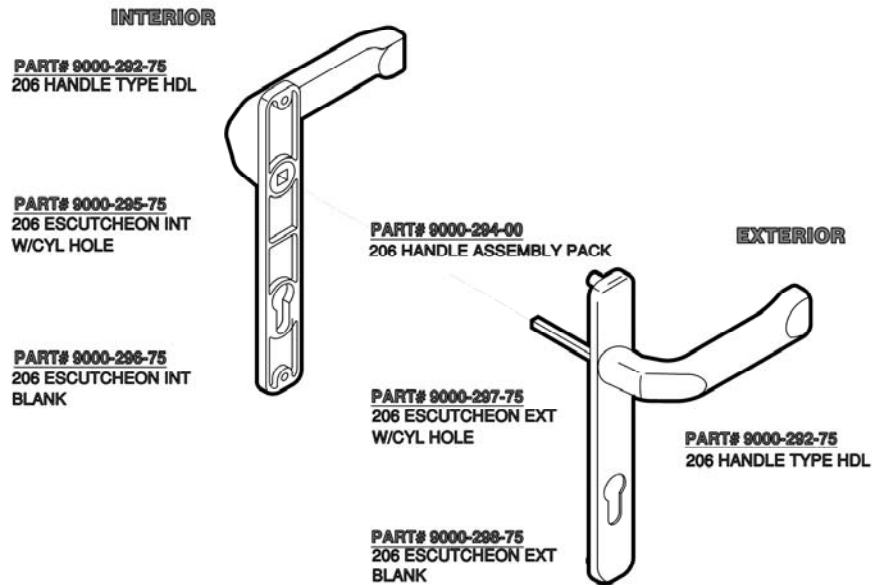
SERIES 1781

OPTIONAL HARDWARE



SERIES 1781

OPTIONAL HARDWARE



AWSF TEST RESULTS

TEST	RESULTS
Air Leakage Rate Test Pressure 75 Pa (1.60 psf)	0.30 L/sec/m ² (0.06 cfm/ft ²)
Water Pressure Achieved	360 Pa (7.5 psf)
Maximum Structural Pressure Achieved	Test Pressure of 2160 Pa (45.0 psf) Positive load deflection - 3.91 mm (0.154 in) Negative load deflection - 6.20 mm (0.11 in) (Measurements taken from the astragal) Deflection under positive load - 0.03 mm (0.001 in) Deflection under negative load - 0.66 mm (0.026 in) (Measurements taken from the middle of the bottom) Deflection under positive load - 2.84 mm (0.112 in) Deflection under negative load - 3.48 mm (0.137 in) (Measurements taken from between the shoot bolts)
Force Entry Resistance, ASTM F842 Grade 40	Pass